



PANAKEIA

45.5m (149' 3") | ASTONDOA | 2008/2025







MAIN DECK – AFT



MAIN SALON



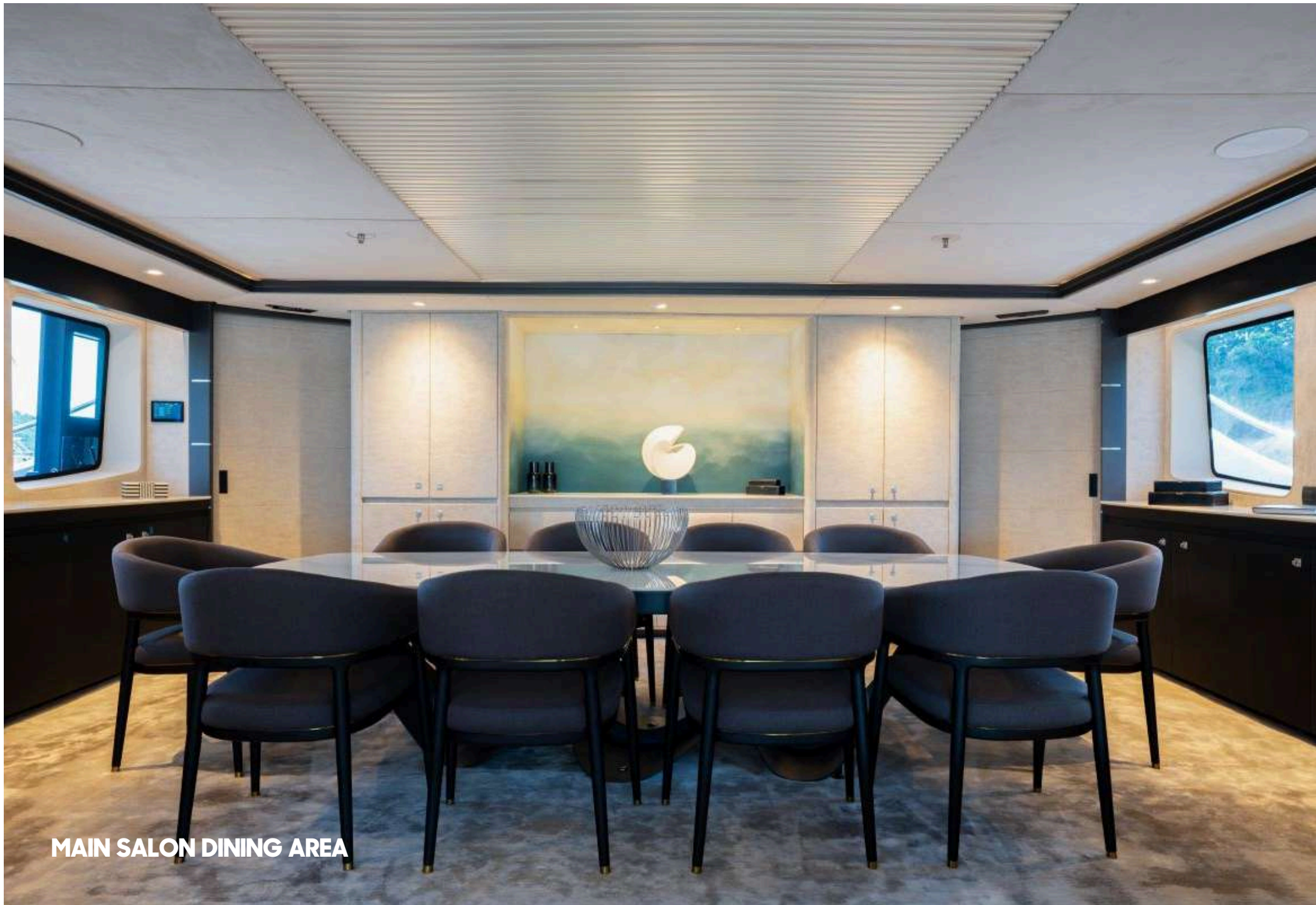
MAIN SALON



MAIN SALON



MAIN SALON DINING AREA



MAIN SALON DINING AREA



STAIRCASE ON THE MAIN DECK



WORK SPACE



WORK SPACE



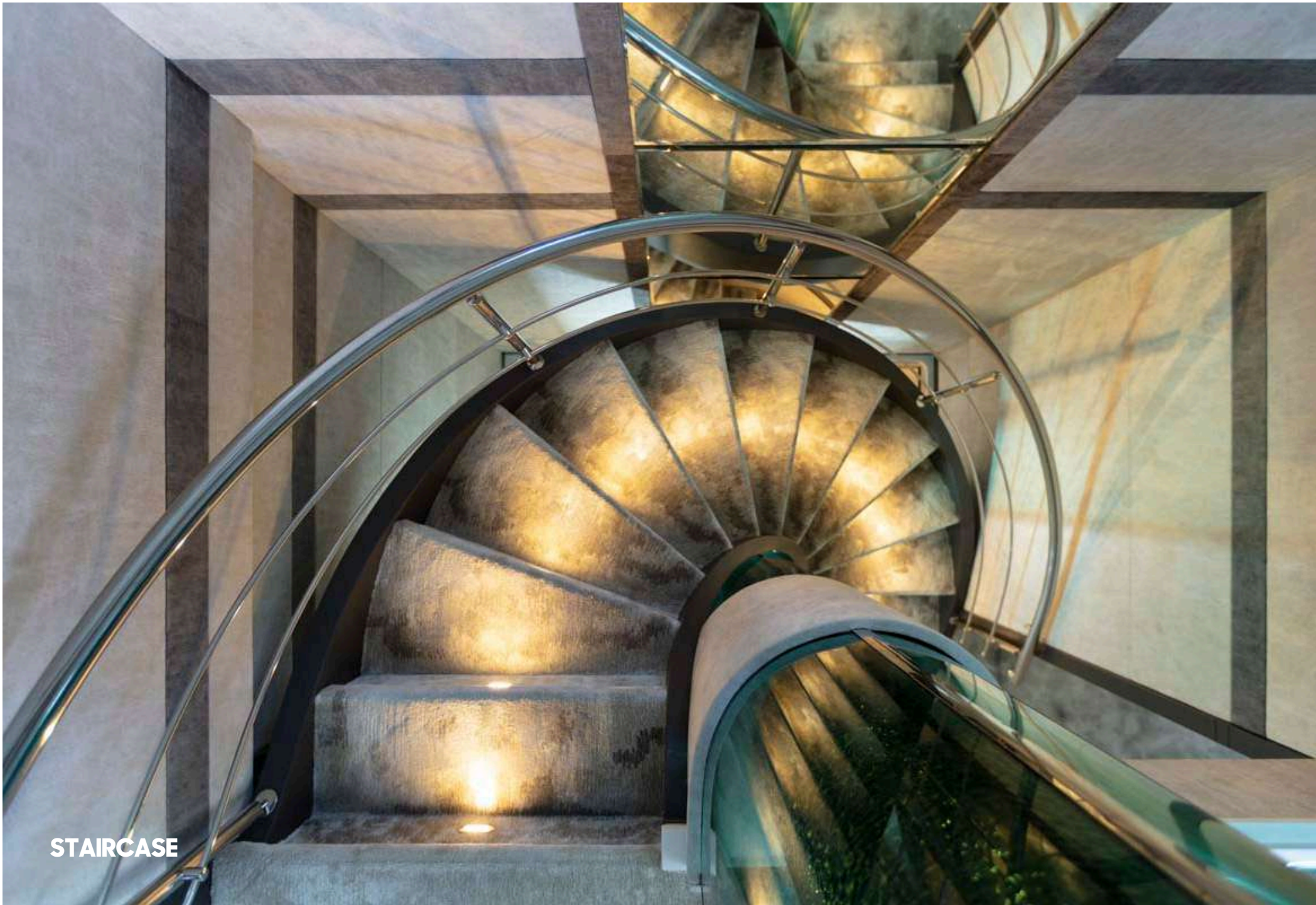
MASTER CABIN



MASTER CABIN



MASTER CABIN ENSUITE



STAIRCASE



LOWER DECK STAIRCASE



DOUBLE CABIN



DOUBLE CABIN



DOUBLE CABIN



DOUBLE CABIN ENSUITE



TWIN CABIN WITH PULLMAN BED



SKY LOUNGE



SKY LOUNGE



SKY LOUNGE DINING AREA



SKY LOUNGE DINING AREA



SKY DECK AFT - DINING AREA



SKY LOUNGE DINING



SKY DECK



SUN DECK



SUN DECK BAR



SUN DECK BAR





SUN DECK BAR



SUN DECK JACUZZI







BRIDGE



BOW



BOW



BEACH CLUB



SWIMMING PLATFORM AND TOYS



SWIMMING PLATFORM AND TOYS











YACHT SPECIFICATIONS

DIMENSIONS

Length	45.5m (149' 3")
Beam	8.6m (28' 3")
Draft	2.3m (7' 7")

GENERAL

Year	2008/2025
Builder	Astondoa
Naval Architect	Astondoa
Hull Construction	Steel
Hull Configuration	Displacement
Superstructure	Tri-Deck +
Gross Tonnage	496

ACCOMMODATION

Number of Cabins	5
	4 Double Cabins
	1 Twin Cabin with Pullman bed
Total Guests	11
Total Crew	10

CERTIFICATIONS

Flag Port of	Marshall Islands
Registry	Bikini

TECHNICAL INFORMATION

Engines	2 x MTU 16V 4000M61R 1520kW
Generators	2 x Kohler 80 kW 1 x Kohler 35 kW
Maximum Speed	16 knots
Cruising Speed	12 knots
Stabilisers	At anchor and underway

TENDERS & TOYS

- 1 x 5.9 metre Castoldi 8 person Jet Tender, with a Yanmar 110 hp inboard engine

PERSONAL WATER CRAFT

- 1 x Seadoo RXP-X260 Jetski 260hp GTX
- 1 x Seadoo GTX 260

WATER SPORT TOYS & EQUIPMENT

- 3 x Jet-skis
- 3 x Syfly E-foils
- 4 x Robosea Seaflyer Sea Scooters
- 1 x Inflatable towable doughnut
- 1 x Freefall climbing wall
- 2 x Paddle boards
- 4 x Kayaks
- 1 x Mono water ski
- 4 x Fishing rods
- Snorkelling equipment
- SCUBA diving equipment

GENERAL

- Air Conditioning
- WiFi
- 2 x Starlinks

WEEKLY CHARTER RATES - MYBA TERMS

- €180,000 per week - Winter/Summer - High Season
- €160,000 per week - Winter/Summer - Low Season

GUEST AREA ● CREW AREA ●

Lower Deck



Main Deck

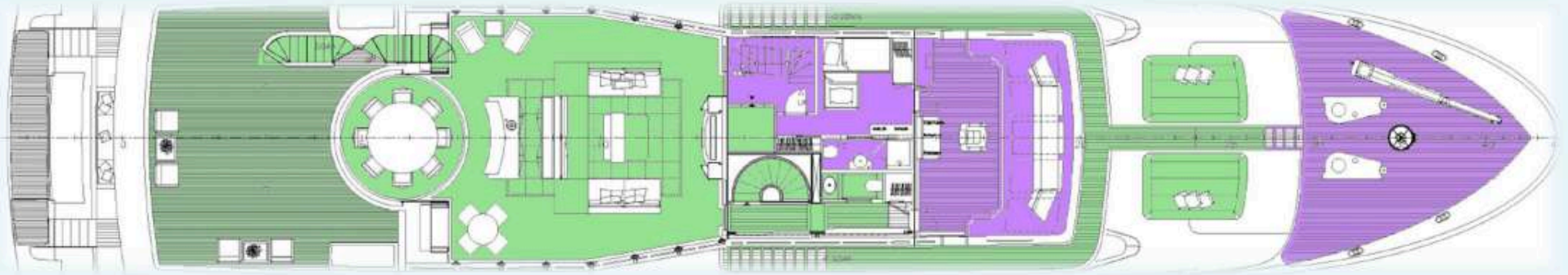


GENERAL ARRANGEMENT

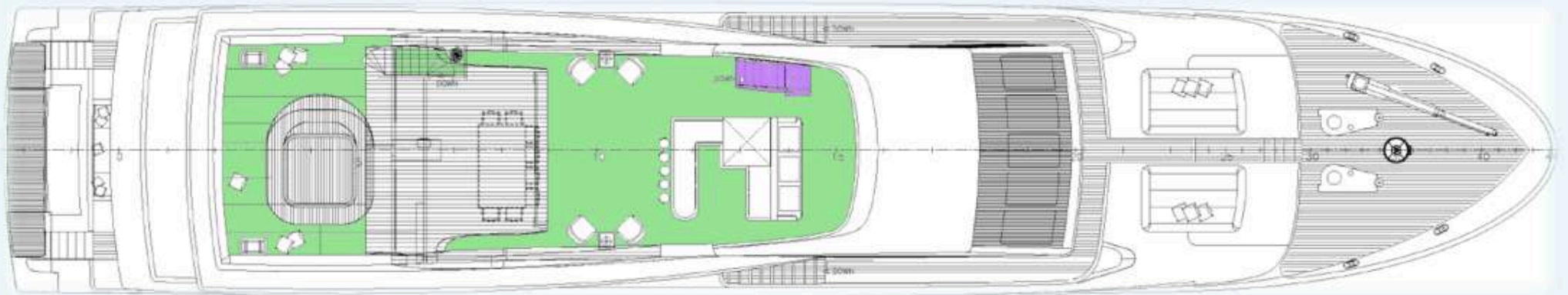
GUEST AREA ●

CREW AREA ●

Bridge Deck



Sun Deck



GENERAL ARRANGEMENT



PANAKEIA

45.5m (149' 3") | ASTONDOA | 2008/2025